

## Visitor Information Guide

### Site access

SNOLAB is located on Vale Creighton mine site and access requires prior approval. Please read the information in this guide carefully. Ensure you follow all signage posted on the property and the instructions from site personnel. Questions can be directed to your site contact or the Senior Education and Outreach Officer. Please arrive hydrated, rested, and having had something for breakfast. If you are sick, please refrain from visiting site.

***Driving directions to site can be found on page 4 of this document.***

### Parking

Visitors to SNOLAB must park at the main Vale Creighton Mine lot. The entrance is on your left-hand side as you drive in before the security gate.

### Signing in

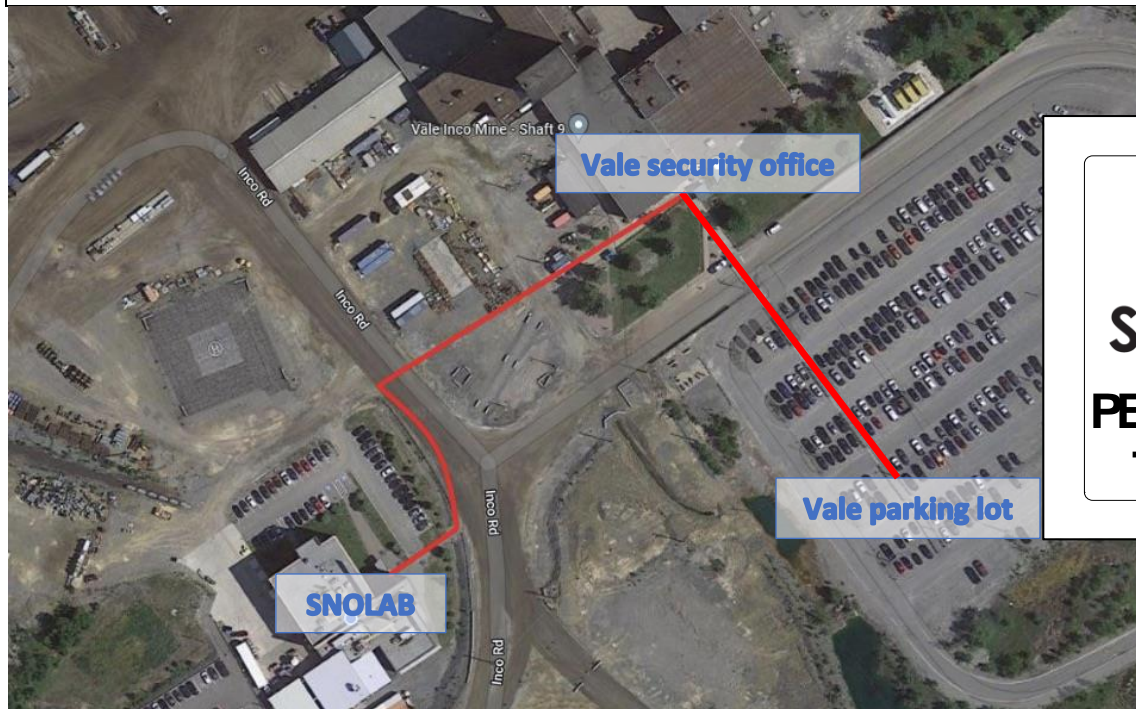
All Visitors coming to SNOLAB must stop at the Vale Security Office and sign-in to the Vale Surface Visitor Log Book. You must enter through the turnstiles and must not by-pass them.

*Your site contact will assist with access to site.*

### Walking from Vale Parking Lot to SNOLAB

After you park, pass through the site access turnstiles, and sign-in at Vale Security Office, you will proceed to SNOLAB by following the SNOLAB Pedestrian Traffic signs.

***Do not walk under the security gate or on any roads. Stay on the designated walking path.***



### **What to Wear**

The underground environment is warm and humid. It is suggested that you wear something light such as a t-shirt and shorts underneath your mine gear. It is also suggested that you wear comfortable, thick socks. If you have long hair, it must be tied back and tucked into your coveralls or under your hardhat.

### **What to Bring**

Lockers are available in the surface change rooms. Do not bring any valuables with you when travel underground to SNOLAB (e.g. wallet, travel documents, car keys). If you have special dietary considerations or require medications (e.g. Epinephrine Pens) please make sure that your Tour Guide is aware, but understand that you are responsible for carrying these items with you. Items that need to come into the clean lab with you must be tied and double-wrapped in plastic bags (provided). Your tour guide will advise and help you with this process.

*You will be provided clothing and PPE for visiting the underground clean lab.*

### **Mine Gear**

SNOLAB will provide all the Personal Protective Equipment (PPE) for your visit. Boots are available in size 4 -13; coveralls in size 38 – 64; and belts in size 28 – 56 inches. If you require PPE outside of this range, please contact your Tour Guide at least one week in advance to accommodate your needs.

*All required PPE is mandatory to enter the mine. Vale/Creighton reserves the right to limit your access underground if you do not have the proper equipment.*

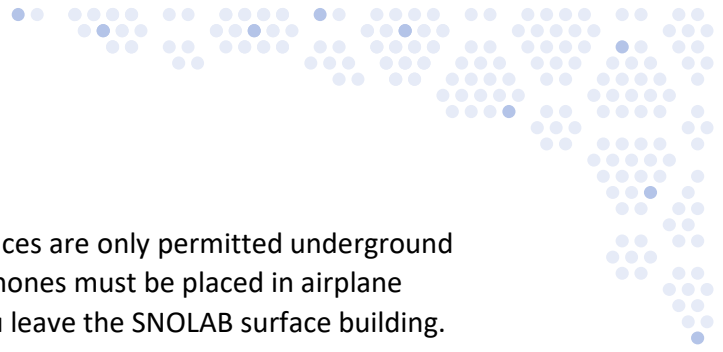
### **Physical Fitness**

Visitors must be physically fit enough to handle the complete tour. This includes carrying all required safety equipment, with some items weighing approximately 2kg, during the 1.4 kilometre walk in and out of the mine drift over uneven terrain. All visitors must be able to scale a 50-foot ladder in case of an emergency evacuation. Visitors with casts or dressings on significant wounds are not permitted underground. If you have questions, please contact your Tour Guide or the SNOLAB Education Outreach Officer.

***If your Tour Guide or Vale representative does not feel you meet the requirements, or you have demonstrated a failure to follow instructions you will not be permitted underground.***

### **Cameras & Radio Frequency Emitting Devices**

Cameras are permitted in the SNOLAB surface building and in the underground laboratory. Pictures are NOT to be taken while on Vale property, this includes the Vale building, cap lamp room and while on the cage. Your Tour Guide will let you know when you can take pictures while underground. Commercial RF emitting devices are not allowed on Vale property.



### **Cell Phones**

Cell phones and/or wireless communication devices are only permitted underground for a tour and only to be used as a camera. All phones must be placed in airplane mode and verified by your tour guide before you leave the SNOLAB surface building.

### **Medical Conditions**

If you have a medical condition that may affect you while on the tour, please let your Tour Guide know in advance of the tour (this includes cold, flu and seasonal allergies). If you require medications or other supplies, you are required to carry these with you while on the tour, but you must inform your Tour Guide before the tour.

### **Cleanliness**

SNOLAB experiments require extreme levels of cleanliness to reduce environmental radiological backgrounds to levels necessary for very sensitive measurements. The staff and scientists work very hard to maintain this level of cleanliness; as a result, there are stringent rules for entry and bringing materials into the underground laboratories. Your SNOLAB Tour Guide will assist you through the cleanliness procedures, particularly the shower and change of clothing process that is required to maintain lab cleanliness.

### **Showers**

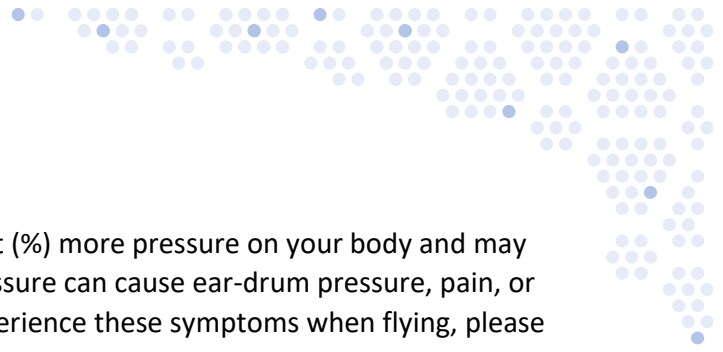
SNOLAB is a cleanroom facility and minimizing mine dust entering the facility is crucial to the science underway in the lab. On arrival at the underground laboratory, everyone is required to go through a multi-step cleaning process. This requires everyone to wash boots before entry and remove some safety equipment before entering the dries. Once in the change rooms (mens and ladies), mine gear and clothing that was worn underneath is removed for showering; this includes a full hair wash. All required items including shampoo and towels are provided.

The change rooms are arranged like a gym change room; the showers are enclosed; however, the room is open. The change rooms are divided into 'clean' and 'dirty' areas - after showering, you are considered clean and cannot pass back onto the dirty side without showering again.

The clothing that you wore under your mine gear must stay on the 'dirty' side. You will be provided with clean room clothing and safety equipment as soon as you exit the shower (T-shirt, clean room coveralls, socks, boots, hairnet, and clean safety glasses).

SNOLAB Tour Guides will do their best to make sure everyone is comfortable as they move through this process; however, cleanliness protocols cannot be compromised. If you feel that you will not be comfortable in this situation or require further clarification of the process, please contact your Tour Guide or the SNOLAB Education Outreach Officer in advance.

**The shower cannot be bypassed for any reason.**



### **Pressurization**

Traveling underground puts about 25-30 percent (%) more pressure on your body and may result in you feeling fatigued. Changes in air pressure can cause ear-drum pressure, pain, or perforation, vertigo, and hearing loss. If you experience these symptoms when flying, please let your Tour Guide know before getting on the cage.

## **Safety Practices**

**Supervision:** All visitors must remain under the supervision of their tour guide at all times (keeping within 2 metres distance).

**In the Drift:** The ground is uneven. Take your time and watch your footing. Walk on the left side in single file if possible. Avoid walking through puddles, if possible, due to unseen hazards beneath the water surface. Your Tour Guide will inform you on protocols for mobile equipment.

**Eyewear:** Contact lenses are not permitted. If you require your personal corrective eyeglasses and they are not safety rated c/w side shields, you must wear a pair of approved safety glasses over your own.

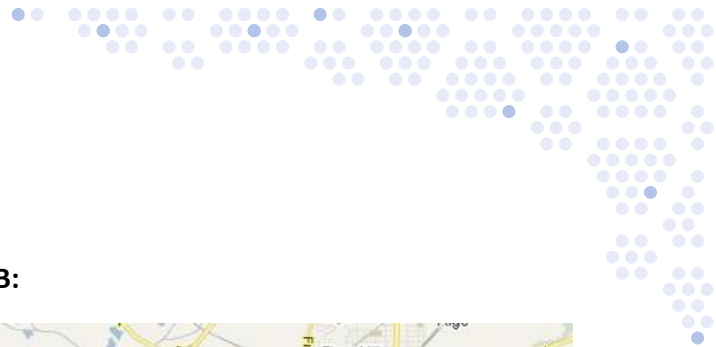
### **For more information:**

SNOLAB Senior Education and Outreach Officer  
blaire.flynn@snolab.ca  
705-692-7000 x 2806  
SNOLAB website: [www.snolab.ca](http://www.snolab.ca)

### **Travel Directions to SNOLAB from Sudbury:**

- Long Lake road - exit right at the HWY 17 WEST exit
- Follow the (Hwy 17 WEST) toward Sault Ste. Marie
- Exit at Hwy 55 West - Lively (at the overpass)
- Go through 1 set of lights
- Turn right onto Regional Road 24 - Lively
- You will travel through Walden and Lively (5.3km)
- Turn right on the ramp at the Creighton Mine sign (McNaughton St.)
- Follow the road for approximately 3km
- Park in the main Creighton Parking lot. The entrance is located on your left-hand side.

**OBEY** all speed limits and road signs while on Vale property.



**Getting to SNOLAB:**

**Travel route from downtown Sudbury to SNOLAB:**

